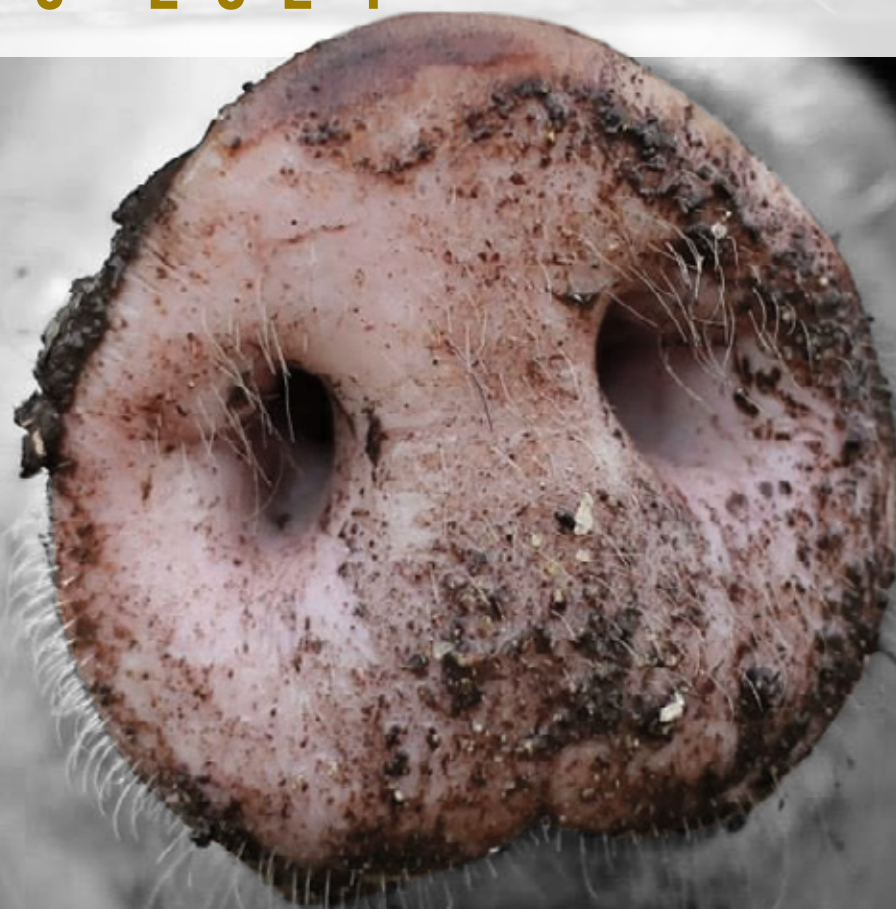


# RESULTADOS DE LAS ENCUESTAS DE GANADO PORCINO

mayo 2024



GOBIERNO  
DE ESPAÑA

MINISTERIO  
DE AGRICULTURA, PESCA  
Y ALIMENTACIÓN

ENCUESTAS GANADERAS, 2024							
GANADO PORCINO							
Análisis provincial del censo de animales por tipos, MAYO 2024 (número de animales)							
Provincias y Comunidades Autónomas	Total animales	Lechones <sup>1</sup>	Cerdos de 20-49 kg (peso vivo)	Cerdos en cebo			
				Total cerdos de cebo (peso vivo)	De 50-79 kg	De 80-109 kg	> 109 kg
Coruña (La)	274.916	86.308	61.179	101.192	52.850	43.985	4.357
Lugo	302.440	20.413	57.135	211.751	132.960	69.405	9.386
Orense	405.368	214.635	42.859	113.854	52.693	53.970	7.191
Pontevedra	434.310	48.365	18.552	349.260	33.111	313.908	2.241
<b>GALICIA</b>	<b>1.417.034</b>	<b>369.721</b>	<b>179.725</b>	<b>776.057</b>	<b>271.614</b>	<b>481.268</b>	<b>23.175</b>
<b>P. DE ASTURIAS</b>	<b>5.866</b>	<b>1.499</b>	<b>1.249</b>	<b>2.249</b>	<b>900</b>	<b>1.012</b>	<b>337</b>
<b>CANTABRIA</b>	<b>974</b>	<b>96</b>	<b>30</b>	<b>659</b>	<b>264</b>	<b>283</b>	<b>112</b>
Alava	18.415	1.861	3.673	11.887	5.139	5.100	1.648
Guipúzcoa	5.947	649	1.150	3.848	1.664	1.651	533
Vizcaya	1.452	16	316	1.056	517	510	29
<b>PAIS VASCO</b>	<b>25.814</b>	<b>2.526</b>	<b>5.139</b>	<b>16.791</b>	<b>7.320</b>	<b>7.261</b>	<b>2.210</b>
<b>NAVARRA</b>	<b>784.634</b>	<b>216.306</b>	<b>56.542</b>	<b>435.134</b>	<b>290.634</b>	<b>127.571</b>	<b>16.929</b>
<b>LA RIOJA</b>	<b>144.240</b>	<b>17.640</b>	<b>16.964</b>	<b>105.078</b>	<b>74.363</b>	<b>30.573</b>	<b>142</b>
Huesca	5.156.222	1.664.123	1.326.711	1.891.285	839.905	866.461	184.919
Teruel	1.275.386	212.907	292.414	691.939	372.231	279.680	40.028
Zaragoza	3.304.869	982.122	797.725	1.205.536	586.300	600.583	18.653
<b>ARAGON</b>	<b>9.736.477</b>	<b>2.859.152</b>	<b>2.416.850</b>	<b>3.788.760</b>	<b>1.798.436</b>	<b>1.746.724</b>	<b>243.600</b>
Barcelona	1.993.932	934.299	322.402	558.091	186.291	325.154	46.646
Girona	762.033	120.411	351.902	224.807	82.709	108.600	33.498
Lleida	4.493.860	1.327.125	1.152.197	1.711.236	912.665	646.280	152.291
Tarragona	583.236	226.554	66.713	230.188	113.217	95.759	21.212
<b>CATALUÑA</b>	<b>7.833.061</b>	<b>2.608.389</b>	<b>1.893.214</b>	<b>2.724.322</b>	<b>1.294.882</b>	<b>1.175.793</b>	<b>253.647</b>
<b>BALEARES</b>	<b>55.594</b>	<b>25.370</b>	<b>4.170</b>	<b>15.970</b>	<b>6.402</b>	<b>5.633</b>	<b>3.935</b>
Ávila	288.189	97.578	42.696	125.114	49.024	42.898	33.192
Burgos	473.566	146.453	78.291	198.224	62.768	108.387	27.069
León	159.322	15.681	33.557	103.736	41.245	41.146	21.345
Palencia	118.682	43.257	17.191	43.952	17.389	22.246	4.317
Salamanca	604.328	186.148	74.846	280.223	71.015	84.604	124.604
Segovia	1.228.255	425.458	226.332	448.272	203.751	168.885	75.636
Soria	517.355	104.917	105.209	210.385	83.813	93.904	32.668
Valladolid	441.844	102.275	73.610	212.063	78.499	77.707	55.857
Zamora	517.173	85.799	97.943	272.611	104.127	95.527	72.957
<b>CASTILLA LEON</b>	<b>4.348.714</b>	<b>1.207.566</b>	<b>749.675</b>	<b>1.894.580</b>	<b>711.631</b>	<b>735.304</b>	<b>447.645</b>
<b>MADRID</b>	<b>13.339</b>	<b>6.750</b>	<b>2.293</b>	<b>880</b>	<b>120</b>	<b>600</b>	<b>160</b>
Albacete	359.054	150.685	56.189	126.111	32.929	43.157	50.025
Ciudad Real	24.273	5.919	2.506	10.521	4.613	4.764	1.144
Cuenca	313.817	108.462	46.311	118.635	58.515	44.140	15.980
Guadalajara	17.131	4.187	9.314	471	13	14	444
Toledo	926.754	312.728	233.396	300.133	140.789	125.301	34.043
<b>CASTILLA LA MANCHA</b>	<b>1.641.029</b>	<b>581.981</b>	<b>347.716</b>	<b>555.871</b>	<b>236.859</b>	<b>217.376</b>	<b>101.636</b>
Alicante	53.857	29.029	3.074	16.092	3.029	11.296	1.767
Castellón	749.795	237.759	213.737	259.784	170.370	79.436	9.978
Valencia	422.291	115.020	129.859	137.488	23.885	81.869	31.734
<b>C. VALENCIANA</b>	<b>1.225.943</b>	<b>381.808</b>	<b>346.670</b>	<b>413.364</b>	<b>197.284</b>	<b>172.601</b>	<b>43.479</b>
<b>R. DE MURCIA</b>	<b>1.598.346</b>	<b>443.829</b>	<b>298.140</b>	<b>697.553</b>	<b>498.253</b>	<b>159.571</b>	<b>39.729</b>
Badajoz	1.067.795	255.223	171.402	492.727	261.367	127.183	104.177
Cáceres	158.468	43.485	16.480	83.566	54.733	11.768	17.065
<b>EXTREMADURA</b>	<b>1.226.263</b>	<b>298.708</b>	<b>187.882</b>	<b>576.293</b>	<b>316.100</b>	<b>138.951</b>	<b>121.242</b>
Almería	671.336	215.125	209.819	217.848	98.110	118.213	1.525
Cádiz	45.041	7.452	14.856	14.613	5.649	4.943	4.021
Córdoba	219.640	37.558	63.781	91.951	36.115	18.196	37.640
Granada	355.110	185.488	47.272	71.117	24.985	41.892	4.240
Huelva	139.253	28.238	46.561	44.646	22.233	7.936	14.477
Jaén	146.061	43.727	44.746	38.124	18.450	19.182	492
Málaga	347.089	113.046	86.530	111.817	49.931	59.969	1.917
Sevilla	572.889	147.130	205.946	164.262	76.230	59.449	28.583
<b>ANDALUCIA</b>	<b>2.496.419</b>	<b>777.764</b>	<b>719.511</b>	<b>754.378</b>	<b>331.703</b>	<b>329.780</b>	<b>92.895</b>
Palmas (Las)	16.940	7.176	3.554	3.230	1.957	1.256	17
S. C. Tenerife	20.498	5.974	4.797	6.987	3.563	3.254	170
<b>CANARIAS</b>	<b>37.438</b>	<b>13.150</b>	<b>8.351</b>	<b>10.217</b>	<b>5.520</b>	<b>4.510</b>	<b>187</b>
<b>ESPAÑA</b>	<b>32.591.185</b>	<b>9.812.255</b>	<b>7.234.121</b>	<b>12.768.156</b>	<b>6.042.285</b>	<b>5.334.811</b>	<b>1.391.060</b>

<sup>1</sup> Cerdos con un peso vivo inferior a 20 Kg.  
Cambio metodológico en 2023

ENCUESTAS GANADERAS, 2024						
GANADO PORCINO						
Análisis provincial del censo de animales por tipos, MAYO 2024 (número de animales)						
Provincias y Comunidades Autónomas	Verracos	Cerdas Reproductoras				
		Total Cerdas Reproductoras	Nunca han parido		Han parido	
			Cerdas todavía no cubiertas	Cerdas cubiertas por 1ª vez	Cerdas cubiertas más veces	Cerdas criando o en reposo
Coruña (La)	102	26.135	3.869	1.776	15.093	5.397
Lugo	157	12.984	3.696	212	5.530	3.546
Orense	216	33.804	5.804	248	27.716	36
Pontevedra	143	17.990	1.982	347	925	14.736
<b>GALICIA</b>	<b>618</b>	<b>90.913</b>	<b>15.351</b>	<b>2.583</b>	<b>49.264</b>	<b>23.715</b>
<b>P. DE ASTURIAS</b>	<b>91</b>	<b>778</b>	<b>134</b>	<b>118</b>	<b>395</b>	<b>131</b>
<b>CANTABRIA</b>	<b>24</b>	<b>165</b>	<b>3</b>	<b>35</b>	<b>77</b>	<b>50</b>
Alava	14	980	108	124	482	266
Guipúzcoa	14	286	18	20	160	88
Vizcaya	15	49	4	4	26	15
<b>PAIS VASCO</b>	<b>43</b>	<b>1.315</b>	<b>130</b>	<b>148</b>	<b>668</b>	<b>369</b>
<b>NAVARRA</b>	<b>382</b>	<b>76.270</b>	<b>9.533</b>	<b>5.465</b>	<b>50.740</b>	<b>10.532</b>
<b>LA RIOJA</b>	<b>20</b>	<b>4.538</b>	<b>541</b>	<b>574</b>	<b>2.238</b>	<b>1.185</b>
Huesca	829	273.274	31.001	35.680	155.138	51.455
Teruel	281	77.845	6.741	8.541	48.464	14.099
Zaragoza	903	318.583	42.295	42.101	175.412	58.775
<b>ARAGON</b>	<b>2.013</b>	<b>669.702</b>	<b>80.037</b>	<b>86.322</b>	<b>379.014</b>	<b>124.329</b>
Barcelona	643	178.497	18.373	19.915	102.618	37.591
Girona	259	64.654	5.600	6.878	41.379	10.797
Lleida	1.017	302.285	28.689	35.646	179.444	58.506
Tarragona	203	59.578	6.707	6.414	34.901	11.556
<b>CATALUÑA</b>	<b>2.122</b>	<b>605.014</b>	<b>59.369</b>	<b>68.853</b>	<b>358.342</b>	<b>118.450</b>
<b>BALEARES</b>	<b>257</b>	<b>9.827</b>	<b>965</b>	<b>856</b>	<b>4.592</b>	<b>3.414</b>
Ávila	155	22.646	3.029	2.330	12.857	4.430
Burgos	245	50.353	14.755	5.135	21.630	8.833
León	175	6.173	2.438	342	2.485	908
Palencia	44	14.238	1.791	1.653	7.891	2.903
Salamanca	1.469	61.642	6.810	4.271	35.250	15.311
Segovia	1.299	126.894	13.369	11.410	76.162	25.953
Soria	382	96.462	44.204	6.627	34.300	11.331
Valladolid	553	53.343	20.510	3.949	20.284	8.600
Zamora	419	60.401	26.330	4.734	21.069	8.268
<b>CASTILLA LEON</b>	<b>4.741</b>	<b>492.152</b>	<b>133.236</b>	<b>40.451</b>	<b>231.928</b>	<b>86.537</b>
<b>MADRID</b>	<b>42</b>	<b>3.374</b>	<b>286</b>	<b>218</b>	<b>2.118</b>	<b>752</b>
Albacete	106	25.963	5.695	3.104	12.455	4.709
Ciudad Real	203	5.124	483	583	2.857	1.201
Cuenca	111	40.298	10.158	4.517	19.441	6.182
Guadalajara	8	3.151	1.815	195	902	239
Toledo	343	80.154	5.873	7.891	46.146	20.244
<b>CASTILLA LA MANCHA</b>	<b>771</b>	<b>154.690</b>	<b>24.024</b>	<b>16.290</b>	<b>81.801</b>	<b>32.575</b>
Alicante	24	5.638	521	671	3.495	951
Castellón	405	38.110	3.252	4.208	21.323	9.327
Valencia	173	39.751	6.546	4.884	21.367	6.954
<b>C. VALENCIANA</b>	<b>602</b>	<b>83.499</b>	<b>10.319</b>	<b>9.763</b>	<b>46.185</b>	<b>17.232</b>
<b>R. DE MURCIA</b>	<b>395</b>	<b>158.429</b>	<b>17.484</b>	<b>15.988</b>	<b>87.857</b>	<b>37.100</b>
Badajoz	4.549	143.894	16.363	3.385	94.007	30.139
Cáceres	567	14.370	1.974	950	8.016	3.430
<b>EXTREMADURA</b>	<b>5.116</b>	<b>158.264</b>	<b>18.337</b>	<b>4.335</b>	<b>102.023</b>	<b>33.569</b>
Almería	136	28.408	4.047	3.599	16.610	4.152
Cádiz	379	7.741	820	900	4.306	1.715
Córdoba	1.344	25.006	2.646	2.902	12.896	6.562
Granada	378	50.855	6.101	6.609	30.510	7.635
Huelva	1.261	18.547	1.699	1.887	9.318	5.643
Jaén	111	19.353	2.333	2.525	11.572	2.923
Málaga	293	35.403	4.219	4.568	21.052	5.564
Sevilla	876	54.675	6.427	6.931	31.471	9.846
<b>ANDALUCIA</b>	<b>4.778</b>	<b>239.988</b>	<b>28.292</b>	<b>29.921</b>	<b>137.735</b>	<b>44.040</b>
Palmas (Las)	197	2.783	691	38	1.225	829
S. C. Tenerife	101	2.639	274	209	1.011	1.145
<b>CANARIAS</b>	<b>298</b>	<b>5.422</b>	<b>965</b>	<b>247</b>	<b>2.236</b>	<b>1.974</b>
<b>ESPAÑA</b>	<b>22.313</b>	<b>2.754.340</b>	<b>399.006</b>	<b>282.167</b>	<b>1.537.213</b>	<b>535.954</b>

ENCUESTAS GANADERAS, 2024 GANADO PORCINO <sup>1</sup> Análisis provincial del censo de animales por tipos, MAYO 2024 (número de animales)							
Provincias y Comunidades Autónomas	Total animales	Lechones <sup>2</sup>	Cerdos de 20-49 kg (peso vivo)	Cerdos en cebo			
				Total cerdos de cebo (peso vivo)	De 50-79 kg	De 80-109 kg	> 109 kg
Coruña (La)	274.916	86.308	61.179	101.192	52.850	43.985	4.357
Lugo	302.440	20.413	57.135	211.751	132.960	69.405	9.386
Orense	405.366	214.635	42.857	113.854	52.693	53.970	7.191
Pontevedra	434.310	48.365	18.552	349.260	33.111	313.908	2.241
<b>GALICIA</b>	<b>1.417.032</b>	<b>369.721</b>	<b>179.723</b>	<b>776.057</b>	<b>271.614</b>	<b>481.268</b>	<b>23.175</b>
<b>P. DE ASTURIAS</b>	<b>5.866</b>	<b>1.499</b>	<b>1.249</b>	<b>2.249</b>	<b>900</b>	<b>1.012</b>	<b>337</b>
<b>CANTABRIA</b>	<b>974</b>	<b>96</b>	<b>30</b>	<b>659</b>	<b>264</b>	<b>283</b>	<b>112</b>
Alava	18.415	1.861	3.673	11.887	5.139	5.100	1.648
Guipúzcoa	5.947	649	1.150	3.848	1.664	1.651	533
Vizcaya	1.452	16	316	1.056	517	510	29
<b>PAIS VASCO</b>	<b>25.814</b>	<b>2.526</b>	<b>5.139</b>	<b>16.791</b>	<b>7.320</b>	<b>7.261</b>	<b>2.210</b>
<b>NAVARRA</b>	<b>784.634</b>	<b>216.306</b>	<b>56.542</b>	<b>435.134</b>	<b>290.634</b>	<b>127.571</b>	<b>16.929</b>
<b>LA RIOJA</b>	<b>144.240</b>	<b>17.640</b>	<b>16.964</b>	<b>105.078</b>	<b>74.363</b>	<b>30.573</b>	<b>142</b>
Huesca	5.156.222	1.664.123	1.326.711	1.891.285	839.905	866.461	184.919
Teruel	1.275.386	212.907	292.414	691.939	372.231	279.680	40.028
Zaragoza	3.304.869	982.122	797.725	1.205.536	586.300	600.583	18.653
<b>ARAGON</b>	<b>9.736.477</b>	<b>2.859.152</b>	<b>2.416.850</b>	<b>3.788.760</b>	<b>1.798.436</b>	<b>1.746.724</b>	<b>243.600</b>
Barcelona	1.993.932	934.299	322.402	558.091	186.291	325.154	46.646
Girona	762.033	120.411	351.902	224.807	82.709	108.600	33.498
Lleida	4.493.860	1.327.125	1.152.197	1.711.236	912.665	646.280	152.291
Tarragona	583.236	226.554	66.713	230.188	113.217	95.759	21.212
<b>CATALUÑA</b>	<b>7.833.061</b>	<b>2.608.389</b>	<b>1.893.214</b>	<b>2.724.322</b>	<b>1.294.882</b>	<b>1.175.793</b>	<b>253.647</b>
<b>BALEARES</b>	<b>55.594</b>	<b>25.370</b>	<b>4.170</b>	<b>15.970</b>	<b>6.402</b>	<b>5.633</b>	<b>3.935</b>
Ávila	205.109	92.640	27.644	62.991	30.625	24.836	7.530
Burgos	462.248	136.913	77.927	197.877	62.590	108.276	27.011
León	134.237	15.681	30.369	81.840	36.081	37.694	8.065
Palencia	118.682	43.257	17.191	43.952	17.389	22.246	4.317
Salamanca	58.290	19.678	5.924	18.648	9.147	5.285	4.216
Segovia	1.097.203	396.949	202.359	382.765	187.165	155.567	40.033
Soria	509.348	103.167	105.209	207.610	82.282	93.543	31.785
Valladolid	344.336	74.492	67.990	159.832	64.058	63.992	31.782
Zamora	399.552	47.912	91.992	211.354	89.898	80.896	40.560
<b>CASTILLA LEON</b>	<b>3.329.005</b>	<b>930.689</b>	<b>626.605</b>	<b>1.366.869</b>	<b>579.235</b>	<b>592.335</b>	<b>195.299</b>
<b>MADRID</b>	<b>13.176</b>	<b>6.686</b>	<b>2.276</b>	<b>839</b>	<b>79</b>	<b>600</b>	<b>160</b>
Albacete	331.569	149.187	46.779	109.534	28.229	41.849	39.456
Ciudad Real	6.735	1.602	1.302	1.845	971	777	97
Cuenca	313.817	108.462	46.311	118.635	58.515	44.140	15.980
Guadalajara	16.584	4.187	9.314	471	13	14	444
Toledo	824.110	277.592	220.771	260.669	125.373	114.786	20.510
<b>CASTILLA LA MANCHA</b>	<b>1.492.815</b>	<b>541.030</b>	<b>324.477</b>	<b>491.154</b>	<b>213.101</b>	<b>201.566</b>	<b>76.487</b>
Alicante	53.857	29.029	3.074	16.092	3.029	11.296	1.767
Castellón	749.795	237.759	213.737	259.784	170.370	79.436	9.978
Valencia	422.291	115.020	129.859	137.488	23.885	81.869	31.734
<b>C. VALENCIANA</b>	<b>1.225.943</b>	<b>381.808</b>	<b>346.670</b>	<b>413.364</b>	<b>197.284</b>	<b>172.601</b>	<b>43.479</b>
<b>R. DE MURCIA</b>	<b>1.494.479</b>	<b>425.514</b>	<b>289.928</b>	<b>626.909</b>	<b>472.046</b>	<b>136.530</b>	<b>18.333</b>
Badajoz	56.333	25.422	5.871	16.003	8.692	3.422	3.889
Cáceres	20.361	10.742	1.974	6.190	1.359	909	3.922
<b>EXTREMADURA</b>	<b>76.694</b>	<b>36.164</b>	<b>7.845</b>	<b>22.193</b>	<b>10.051</b>	<b>4.331</b>	<b>7.811</b>
Almería	652.955	208.308	205.276	215.167	97.980	117.187	0
Cádiz	7.439	2.439	358	3.176	1.322	1.854	0
Córdoba	27.104	9.781	3.270	9.362	4.500	4.862	0
Granada	333.282	182.886	40.723	61.278	23.438	37.840	0
Huelva	4.605	3.394	0	6	0	6	0
Jaén	121.997	38.277	37.162	33.272	16.071	17.201	0
Málaga	324.378	106.780	80.099	106.015	46.933	59.082	0
Sevilla	419.524	133.395	148.805	96.731	50.866	45.865	0
<b>ANDALUCIA</b>	<b>1.891.284</b>	<b>685.260</b>	<b>515.693</b>	<b>525.007</b>	<b>241.110</b>	<b>283.897</b>	<b>0</b>
Palmas (Las)	16.939	7.176	3.554	3.230	1.957	1.256	17
S. C. Tenerife	20.498	5.974	4.797	6.987	3.563	3.254	170
<b>CANARIAS</b>	<b>37.437</b>	<b>13.150</b>	<b>8.351</b>	<b>10.217</b>	<b>5.520</b>	<b>4.510</b>	<b>187</b>
<b>ESPAÑA</b>	<b>29.564.525</b>	<b>9.121.000</b>	<b>6.695.726</b>	<b>11.321.572</b>	<b>5.463.241</b>	<b>4.972.488</b>	<b>885.843</b>

<sup>1</sup> No incluye el porcino ibérico

<sup>2</sup> Cerdos con un peso vivo inferior a 20 Kg.

ENCUESTAS GANADERAS, 2024						
GANADO PORCINO <sup>1</sup>						
Análisis provincial del censo de animales por tipos, MAYO 2024 (número de animales)						
Provincias y Comunidades Autónomas	Verracos	Cerdas Reproductoras				
		Total Cerdas Reproductoras	Nunca han parido		Han parido	
			Cerdas todavía no cubiertas	Cerdas cubiertas por 1ª vez	Cerdas cubiertas más veces	Cerdas criando o en reposo
Coruña (La)	102	26.135	3.869	1.776	15.093	5.397
Lugo	157	12.984	3.696	212	5.530	3.546
Orense	216	33.804	5.804	248	27.716	36
Pontevedra	143	17.990	1.982	347	925	14.736
<b>GALICIA</b>	<b>618</b>	<b>90.913</b>	<b>15.351</b>	<b>2.583</b>	<b>49.264</b>	<b>23.715</b>
<b>P. DE ASTURIAS</b>	<b>91</b>	<b>778</b>	<b>134</b>	<b>118</b>	<b>395</b>	<b>131</b>
<b>CANTABRIA</b>	<b>24</b>	<b>165</b>	<b>3</b>	<b>35</b>	<b>77</b>	<b>50</b>
Alava	14	980	108	124	482	266
Guipúzcoa	14	286	18	20	160	88
Vizcaya	15	49	4	4	26	15
<b>PAIS VASCO</b>	<b>43</b>	<b>1.315</b>	<b>130</b>	<b>148</b>	<b>668</b>	<b>369</b>
<b>NAVARRA</b>	<b>382</b>	<b>76.270</b>	<b>9.533</b>	<b>5.465</b>	<b>50.740</b>	<b>10.532</b>
<b>LA RIOJA</b>	<b>20</b>	<b>4.538</b>	<b>541</b>	<b>574</b>	<b>2.238</b>	<b>1.185</b>
Huesca	829	273.274	31.001	35.680	155.138	51.455
Teruel	281	77.845	6.741	8.541	48.464	14.099
Zaragoza	903	318.583	42.295	42.101	175.412	58.775
<b>ARAGON</b>	<b>2.013</b>	<b>669.702</b>	<b>80.037</b>	<b>86.322</b>	<b>379.014</b>	<b>124.329</b>
Barcelona	643	178.497	18.373	19.915	102.618	37.591
Girona	259	64.654	5.600	6.878	41.379	10.797
Lleida	1.017	302.285	28.689	35.646	179.444	58.506
Tarragona	203	59.578	6.707	6.414	34.901	11.556
<b>CATALUÑA</b>	<b>2.122</b>	<b>605.014</b>	<b>59.369</b>	<b>68.853</b>	<b>358.342</b>	<b>118.450</b>
<b>BALEARES</b>	<b>257</b>	<b>9.827</b>	<b>965</b>	<b>856</b>	<b>4.592</b>	<b>3.414</b>
Avila	140	21.694	2.977	2.297	12.201	4.219
Burgos	243	49.288	14.715	5.050	21.054	8.469
León	175	6.172	2.438	342	2.484	908
Palencia	44	14.238	1.791	1.653	7.891	2.903
Salamanca	291	13.749	1.048	1.236	8.771	2.694
Segovia	1.234	113.896	11.061	10.217	69.172	23.446
Soria	373	92.989	44.007	6.311	32.046	10.625
Valladolid	505	41.517	19.225	2.890	13.604	5.798
Zamora	354	47.940	20.923	3.705	16.868	6.444
<b>CASTILLA LEON</b>	<b>3.359</b>	<b>401.483</b>	<b>118.185</b>	<b>33.701</b>	<b>184.091</b>	<b>65.506</b>
<b>MADRID</b>	<b>38</b>	<b>3.337</b>	<b>279</b>	<b>211</b>	<b>2.095</b>	<b>752</b>
Albacete	106	25.963	5.695	3.104	12.455	4.709
Ciudad Real	175	1.811	194	136	878	603
Cuenca	111	40.298	10.158	4.517	19.441	6.182
Guadalajara	5	2.607	1.795	129	551	132
Toledo	267	64.811	4.863	6.459	36.801	16.688
<b>CASTILLA LA MANCHA</b>	<b>664</b>	<b>135.490</b>	<b>22.705</b>	<b>14.345</b>	<b>70.126</b>	<b>28.314</b>
Alicante	24	5.638	521	671	3.495	951
Castellón	405	38.110	3.252	4.208	21.323	9.327
Valencia	173	39.751	6.546	4.884	21.367	6.954
<b>C. VALENCIANA</b>	<b>602</b>	<b>83.499</b>	<b>10.319</b>	<b>9.763</b>	<b>46.185</b>	<b>17.232</b>
<b>R. DE MURCIA</b>	<b>393</b>	<b>151.735</b>	<b>16.543</b>	<b>14.925</b>	<b>84.717</b>	<b>35.550</b>
Badajoz	1.059	7.978	1.008	8	6.097	865
Cáceres	109	1.346	591	480	70	205
<b>EXTREMADURA</b>	<b>1.168</b>	<b>9.324</b>	<b>1.599</b>	<b>488</b>	<b>6.167</b>	<b>1.070</b>
Almería	113	24.092	3.529	3.038	14.020	3.505
Cádiz	21	1.443	173	187	865	218
Córdoba	39	4.651	592	598	2.759	702
Granada	349	48.047	5.766	6.246	28.828	7.207
Huelva	3	1.201	144	156	721	180
Jaén	70	13.216	1.586	1.718	7.930	1.982
Málaga	180	31.303	3.757	4.069	18.781	4.696
Sevilla	268	40.324	4.839	5.242	24.194	6.049
<b>ANDALUCIA</b>	<b>1.043</b>	<b>164.277</b>	<b>20.386</b>	<b>21.254</b>	<b>98.098</b>	<b>24.539</b>
Palmas (Las)	196	2.783	691	38	1.225	829
S. C. Tenerife	101	2.639	274	209	1.011	1.145
<b>CANARIAS</b>	<b>297</b>	<b>5.422</b>	<b>965</b>	<b>247</b>	<b>2.236</b>	<b>1.974</b>
<b>ESPAÑA</b>	<b>13.134</b>	<b>2.413.089</b>	<b>357.044</b>	<b>259.888</b>	<b>1.339.045</b>	<b>457.112</b>

<sup>1</sup> No incluye el porcino ibérico

ENCUESTAS GANADERAS, 2024							
PORCINO IBERICO							
Análisis provincial del censo de animales por tipos, MAYO 2024 (número de animales)							
Provincias y Comunidades Autónomas	Total animales	Lechones <sup>1</sup>	Cerdos de 20-49 kg (peso vivo)	Cerdos en cebo			
				Total cerdos de cebo (peso vivo)	De 50-79 kg	De 80-109 kg	> 109 kg
Coruña (La)	0	0	0	0	0	0	0
Lugo	0	0	0	0	0	0	0
Orense	2	0	2	0	0	0	0
Pontevedra	0	0	0	0	0	0	0
<b>GALICIA</b>	<b>2</b>	<b>0</b>	<b>2</b>	<b>0</b>	<b>0</b>	<b>0</b>	<b>0</b>
<b>P. DE ASTURIAS</b>	<b>0</b>	<b>0</b>	<b>0</b>	<b>0</b>	<b>0</b>	<b>0</b>	<b>0</b>
<b>CANTABRIA</b>	<b>0</b>	<b>0</b>	<b>0</b>	<b>0</b>	<b>0</b>	<b>0</b>	<b>0</b>
Alava	0	0	0	0	0	0	0
Guipúzcoa	0	0	0	0	0	0	0
Vizcaya	0	0	0	0	0	0	0
<b>PAIS VASCO</b>	<b>0</b>	<b>0</b>	<b>0</b>	<b>0</b>	<b>0</b>	<b>0</b>	<b>0</b>
<b>NAVARRA</b>	<b>0</b>	<b>0</b>	<b>0</b>	<b>0</b>	<b>0</b>	<b>0</b>	<b>0</b>
<b>LA RIOJA</b>	<b>0</b>	<b>0</b>	<b>0</b>	<b>0</b>	<b>0</b>	<b>0</b>	<b>0</b>
Huesca	0	0	0	0	0	0	0
Teruel	0	0	0	0	0	0	0
Zaragoza	0	0	0	0	0	0	0
<b>ARAGON</b>	<b>0</b>	<b>0</b>	<b>0</b>	<b>0</b>	<b>0</b>	<b>0</b>	<b>0</b>
Barcelona	0	0	0	0	0	0	0
Girona	0	0	0	0	0	0	0
Lleida	0	0	0	0	0	0	0
Tarragona	0	0	0	0	0	0	0
<b>CATALUÑA</b>	<b>0</b>	<b>0</b>	<b>0</b>	<b>0</b>	<b>0</b>	<b>0</b>	<b>0</b>
<b>BALEARES</b>	<b>0</b>	<b>0</b>	<b>0</b>	<b>0</b>	<b>0</b>	<b>0</b>	<b>0</b>
Ávila	83.080	4.938	15.052	62.123	18.399	18.062	25.662
Burgos	11.318	9.540	364	347	178	111	58
León	25.085	0	3.188	21.896	5.164	3.452	13.280
Palencia	0	0	0	0	0	0	0
Salamanca	546.038	166.470	68.922	261.575	61.868	79.319	120.388
Segovia	131.052	28.509	23.973	65.507	16.586	13.318	35.603
Soria	8.007	1.750	0	2.775	1.531	361	883
Valladolid	97.508	27.783	5.620	52.231	14.441	13.715	24.075
Zamora	117.621	37.887	5.951	61.257	14.229	14.631	32.397
<b>CASTILLA LEON</b>	<b>1.019.709</b>	<b>276.877</b>	<b>123.070</b>	<b>527.711</b>	<b>132.396</b>	<b>142.969</b>	<b>252.346</b>
<b>MADRID</b>	<b>163</b>	<b>64</b>	<b>17</b>	<b>41</b>	<b>41</b>	<b>0</b>	<b>0</b>
Albacete	27.485	1.498	9.410	16.577	4.700	1.308	10.569
Ciudad Real	17.538	4.317	1.204	8.676	3.642	3.987	1.047
Cuenca	0	0	0	0	0	0	0
Guadalajara	547	0	0	0	0	0	0
Toledo	102.644	35.136	12.625	39.464	15.416	10.515	13.533
<b>CASTILLA LA MANCHA</b>	<b>148.214</b>	<b>40.951</b>	<b>23.239</b>	<b>64.717</b>	<b>23.758</b>	<b>15.810</b>	<b>25.149</b>
Alicante	0	0	0	0	0	0	0
Castellón	0	0	0	0	0	0	0
Valencia	0	0	0	0	0	0	0
<b>C. VALENCIANA</b>	<b>0</b>	<b>0</b>	<b>0</b>	<b>0</b>	<b>0</b>	<b>0</b>	<b>0</b>
<b>R. DE MURCIA</b>	<b>103.867</b>	<b>18.315</b>	<b>8.212</b>	<b>70.644</b>	<b>26.207</b>	<b>23.041</b>	<b>21.396</b>
Badajoz	1.011.462	229.801	165.531	476.724	252.675	123.761	100.288
Cáceres	138.107	32.743	14.506	77.376	53.374	10.859	13.143
<b>EXTREMADURA</b>	<b>1.149.569</b>	<b>262.544</b>	<b>180.037</b>	<b>554.100</b>	<b>306.049</b>	<b>134.620</b>	<b>113.431</b>
Almería	18.380	6.817	4.543	2.681	130	1.026	1525
Cádiz	37.604	5.013	14.498	11.437	4.327	3.089	4021
Córdoba	192.537	27.777	60.511	82.589	31.615	13.334	37640
Granada	21.827	2.602	6.549	9.839	1.547	4.052	4240
Huelva	134.649	24.844	46.561	44.640	22.233	7.930	14477
Jaén	24.064	5.450	7.584	4.852	2.379	1.981	492
Málaga	22.712	6.266	6.431	5.802	2.998	887	1917
Sevilla	153.366	13.735	57.141	67.531	25.364	13.584	28583
<b>ANDALUCIA</b>	<b>605.139</b>	<b>92.504</b>	<b>203.818</b>	<b>229.371</b>	<b>90.593</b>	<b>45.883</b>	<b>92895</b>
Palmas (Las)	1	0	0	0	0	0	0
S. C. Tenerife	0	0	0	0	0	0	0
<b>CANARIAS</b>	<b>1</b>	<b>0</b>	<b>0</b>	<b>0</b>	<b>0</b>	<b>0</b>	<b>0</b>
<b>ESPAÑA</b>	<b>3.026.664</b>	<b>691.255</b>	<b>538.395</b>	<b>1.446.584</b>	<b>579.044</b>	<b>362.323</b>	<b>505.217</b>

<sup>1</sup> Cerdos con un peso vivo inferior a 20 Kg.

ENCUESTAS GANADERAS, 2024						
PORCINO IBERICO						
Análisis provincial del censo de animales por tipos, MAYO 2024 (número de animales)						
Provincias y Comunidades Autónomas	Verracos	Total Cerdas Reproductoras	Cerdas Reproductoras			
			Nunca han parido		Han parido	
			Cerdas todavía no cubiertas	Cerdas cubiertas por 1ª vez	Cerdas cubiertas más veces	Cerdas criando o en reposo
Coruña (La)	0	0	0	0	0	0
Lugo	0	0	0	0	0	0
Orense	0	0	0	0	0	0
Pontevedra	0	0	0	0	0	0
<b>GALICIA</b>	<b>0</b>	<b>0</b>	<b>0</b>	<b>0</b>	<b>0</b>	<b>0</b>
<b>P. DE ASTURIAS</b>	<b>0</b>	<b>0</b>	<b>0</b>	<b>0</b>	<b>0</b>	<b>0</b>
<b>CANTABRIA</b>	<b>0</b>	<b>0</b>	<b>0</b>	<b>0</b>	<b>0</b>	<b>0</b>
Alava	0	0	0	0	0	0
Guipúzcoa	0	0	0	0	0	0
Vizcaya	0	0	0	0	0	0
<b>PAIS VASCO</b>	<b>0</b>	<b>0</b>	<b>0</b>	<b>0</b>	<b>0</b>	<b>0</b>
<b>NAVARRA</b>	<b>0</b>	<b>0</b>	<b>0</b>	<b>0</b>	<b>0</b>	<b>0</b>
<b>LA RIOJA</b>	<b>0</b>	<b>0</b>	<b>0</b>	<b>0</b>	<b>0</b>	<b>0</b>
Huesca	0	0	0	0	0	0
Teruel	0	0	0	0	0	0
Zaragoza	0	0	0	0	0	0
<b>ARAGON</b>	<b>0</b>	<b>0</b>	<b>0</b>	<b>0</b>	<b>0</b>	<b>0</b>
Barcelona	0	0	0	0	0	0
Girona	0	0	0	0	0	0
Lleida	0	0	0	0	0	0
Tarragona	0	0	0	0	0	0
<b>CATALUÑA</b>	<b>0</b>	<b>0</b>	<b>0</b>	<b>0</b>	<b>0</b>	<b>0</b>
<b>BALEARES</b>	<b>0</b>	<b>0</b>	<b>0</b>	<b>0</b>	<b>0</b>	<b>0</b>
Avila	15	952	52	33	656	211
Burgos	2	1.065	40	85	576	364
León	0	1	0	0	1	0
Palencia	0	0	0	0	0	0
Salamanca	1.178	47.893	5.762	3.035	26.479	12.617
Segovia	65	12.998	2.308	1.193	6.990	2.507
Soria	9	3.473	197	316	2.254	706
Valladolid	48	11.826	1.285	1.059	6.680	2.802
Zamora	65	12.461	5.407	1.029	4.201	1.824
<b>CASTILLA LEON</b>	<b>1.382</b>	<b>90.669</b>	<b>15.051</b>	<b>6.750</b>	<b>47.837</b>	<b>21.031</b>
<b>MADRID</b>	<b>4</b>	<b>37</b>	<b>7</b>	<b>7</b>	<b>23</b>	<b>0</b>
Albacete	0	0	0	0	0	0
Ciudad Real	28	3.313	289	447	1.979	598
Cuenca	0	0	0	0	0	0
Guadalajara	3	544	20	66	351	107
Toledo	76	15.343	1.010	1.432	9.345	3.556
<b>CASTILLA LA MANCHA</b>	<b>107</b>	<b>19.200</b>	<b>1.319</b>	<b>1.945</b>	<b>11.675</b>	<b>4.261</b>
Alicante	0	0	0	0	0	0
Castellón	0	0	0	0	0	0
Valencia	0	0	0	0	0	0
<b>C. VALENCIANA</b>	<b>0</b>	<b>0</b>	<b>0</b>	<b>0</b>	<b>0</b>	<b>0</b>
<b>R. DE MURCIA</b>	<b>2</b>	<b>6.694</b>	<b>941</b>	<b>1.063</b>	<b>3.140</b>	<b>1.550</b>
Badajoz	3.490	135.916	15.355	3.377	87.910	29.274
Cáceres	458	13.024	1.383	470	7.946	3.225
<b>EXTREMADURA</b>	<b>3.948</b>	<b>148.940</b>	<b>16.738</b>	<b>3.847</b>	<b>95.856</b>	<b>32.499</b>
Almería	23	4.316	518	561	2.590	647
Cádiz	358	6.298	647	713	3.441	1.497
Córdoba	1.305	20.355	2.054	2.304	10.137	5.860
Granada	29	2.808	335	363	1.682	428
Huelva	1.258	17.346	1.555	1.731	8.597	5.463
Jaén	41	6.137	747	807	3.642	941
Málaga	113	4.100	462	499	2.271	868
Sevilla	608	14.351	1.588	1.689	7.277	3.797
<b>ANDALUCIA</b>	<b>3.735</b>	<b>75.711</b>	<b>7.906</b>	<b>8.667</b>	<b>39.637</b>	<b>19.501</b>
Palmas (Las)	1	0	0	0	0	0
S. C. Tenerife	0	0	0	0	0	0
<b>CANARIAS</b>	<b>1</b>	<b>0</b>	<b>0</b>	<b>0</b>	<b>0</b>	<b>0</b>
<b>ESPAÑA</b>	<b>9.179</b>	<b>341.251</b>	<b>41.962</b>	<b>22.279</b>	<b>198.168</b>	<b>78.842</b>

S.G. Análisis, Coordinación y Estadística:

<https://www.mapa.gob.es/es/estadistica/temas/estadisticas-agrarias/ganaderia/encuestas-ganaderas/>

Correo electrónico: [sgapc@mapa.es](mailto:sgapc@mapa.es). Se autoriza su utilización total o parcial siempre que se cite expresamente su origen. Referenciar el documento como:

**“Resultados de las Encuestas de Ganado Porcino”** Edita: © **Ministerio de Agricultura, Pesca y Alimentación**. NIPO: 003-22-137-5

Catálogo de Publicaciones de la Administración General del Estado: <https://cpage.mpr.gob.es/>