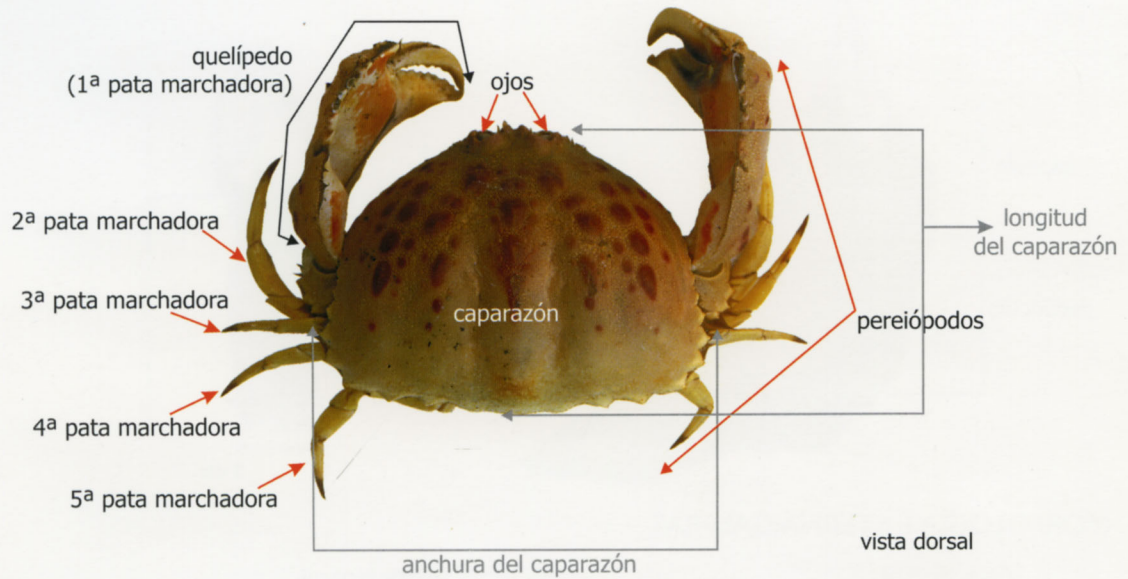
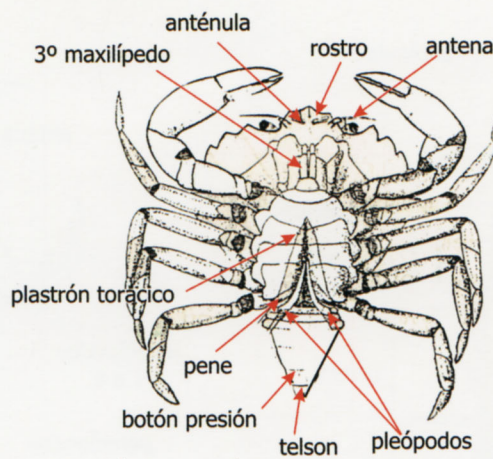


TÉRMINOS TÉCNICOS Y PRINCIPALES MEDIDAS UTILIZADAS

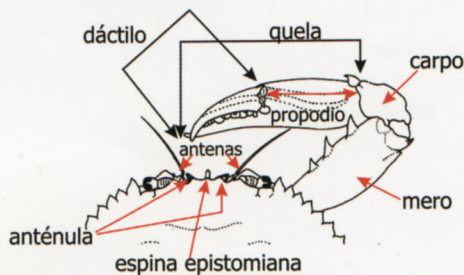
MORFOLOGÍA: CANGREJOS



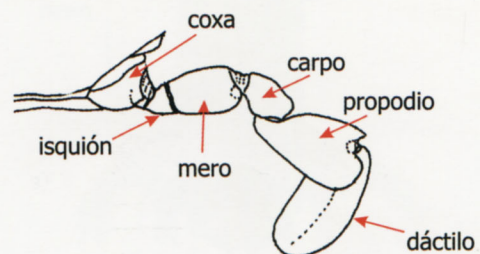
Vista ventral



Vista dorsal (detalle)

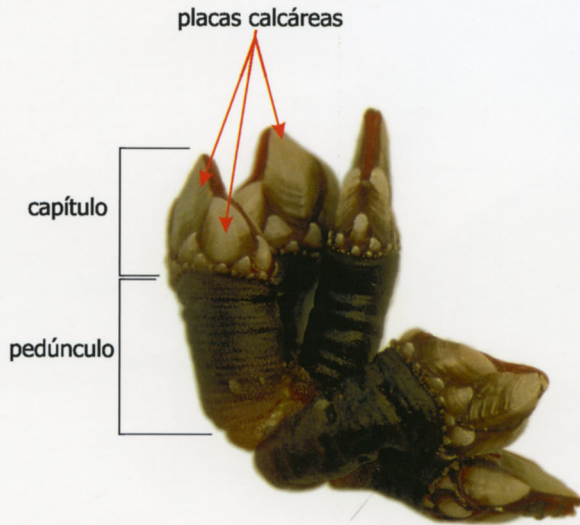


Partes de la pata



TÉRMINOS TÉCNICOS Y PRINCIPALES MEDIDAS UTILIZADAS

MORFOLOGÍA EXTERNA:PERCEBES

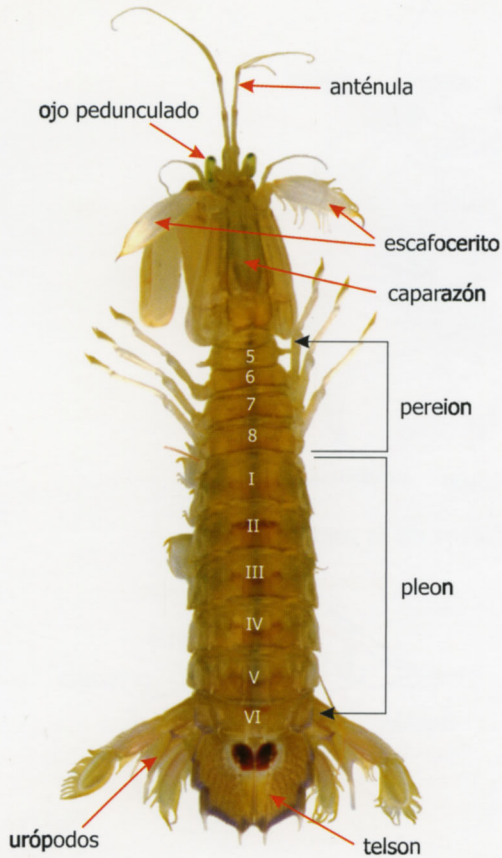


Partes del Percebe

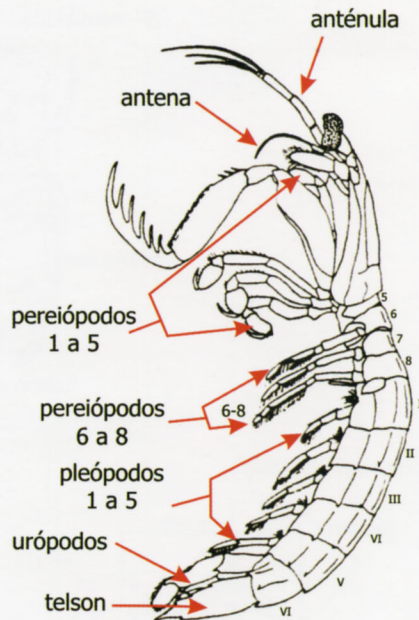


MORFOLOGÍA EXTERNA: GALERAS

Vista dorsal

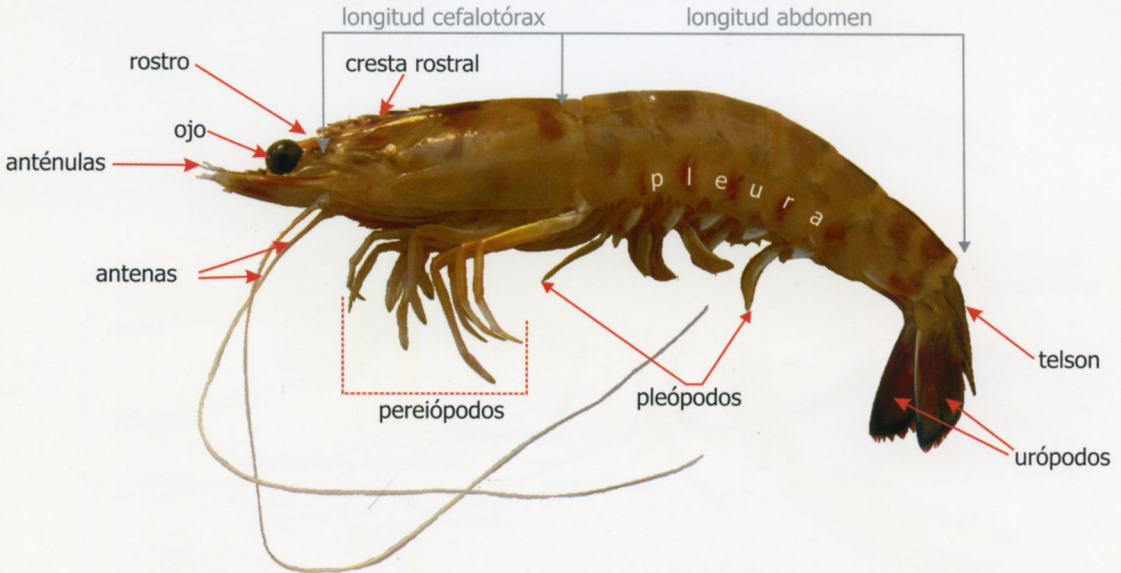


Vista lateral

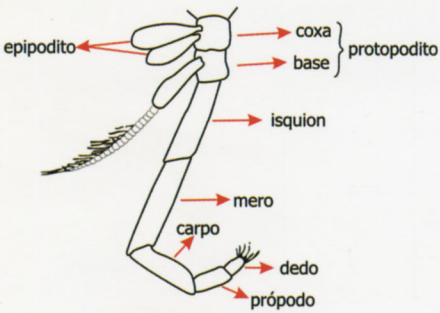


TÉRMINOS TÉCNICOS Y PRINCIPALES MEDIDAS UTILIZADAS

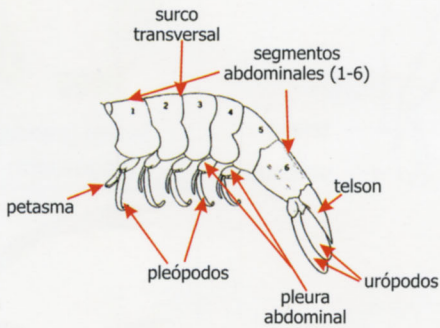
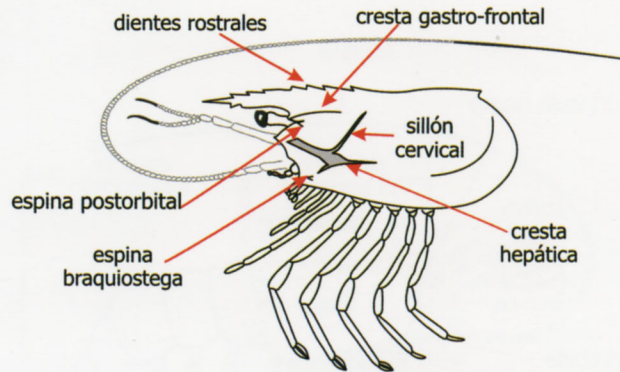
MORFOLOGÍA EXTERNA: GAMBAS Y LANGOSTINOS



Partes de la pata

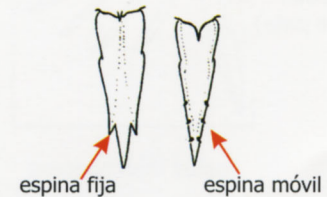


Vista lateral del caparazón



Vista lateral del abdomen

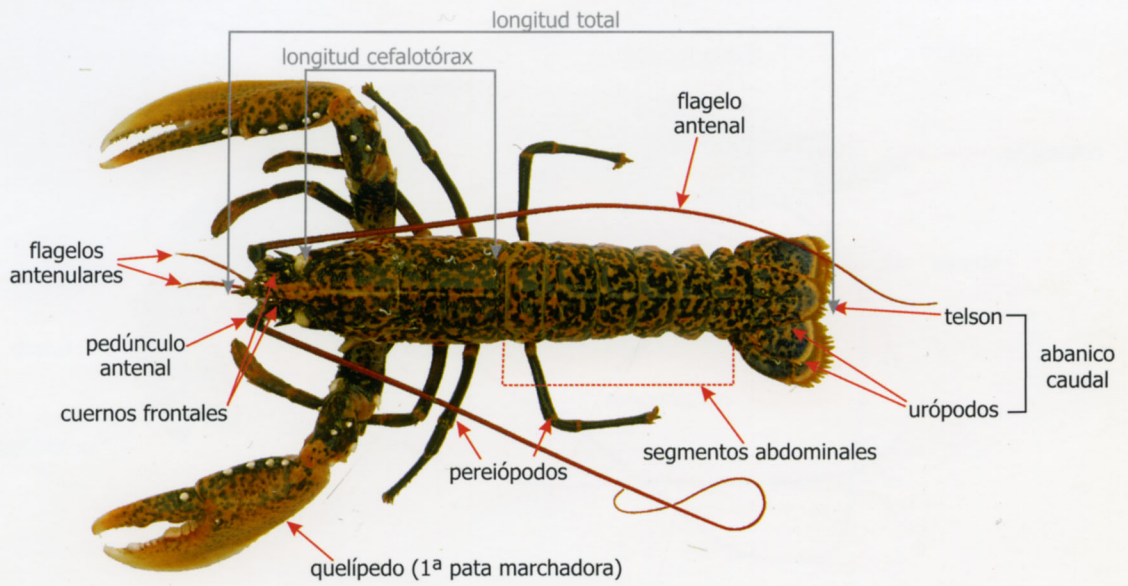
(segmentos del 1 al 6)



Tipos de espinas de telson

TÉRMINOS TÉCNICOS Y PRINCIPALES MEDIDAS UTILIZADAS

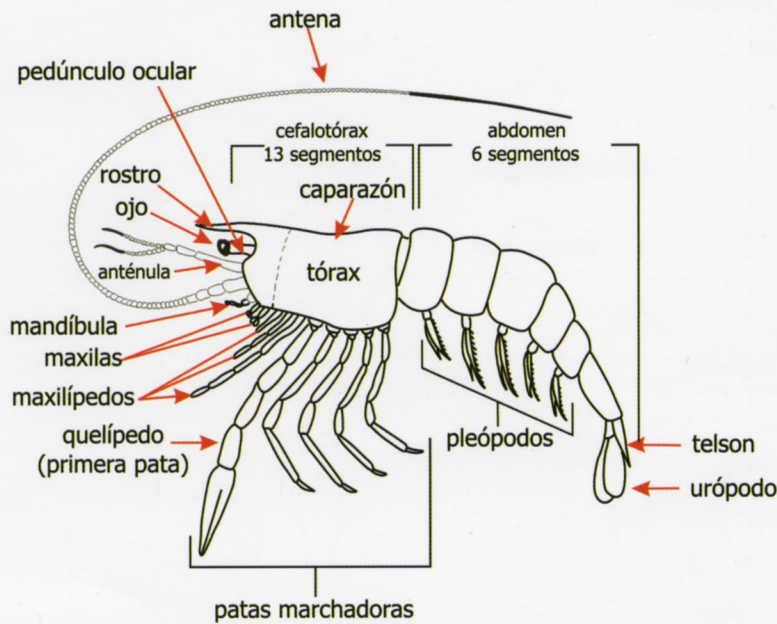
MORFOLOGÍA EXTERNA: PALINUROS Y ASTÁCIDOS



Vista lateral

bogavantes

Tipos de terminaciones de las patas del primer par



patas (langosta)



pinzas grandes (bogavante)



pinzas pequeñas (cigala)